



Natural Resources

Sulfide Mining Near Sensitive Areas

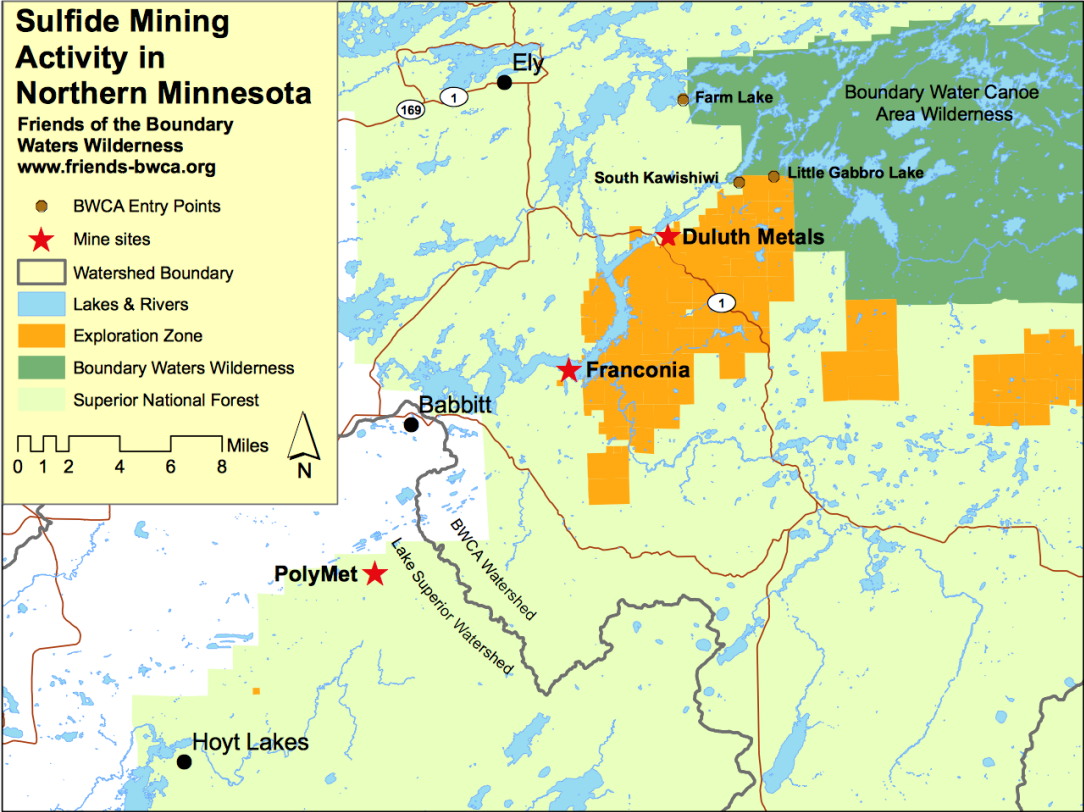
Background

- ▶ Mining companies are interested in mining near the Boundary Waters (BWCA) and other sensitive areas
- ▶ This poses a believed potential threat to the ecosystem of the Boundary Waters and surrounding areas

However...

Investing in the mining near the Boundary Waters would...

- ▶ Allow MN to become less dependent on other countries and states.
- ▶ Boost MN's GDP.
- ▶ Economically benefit northern Minnesota.
 - Creates high-paying, long-term and short-term jobs
 - Generates tax revenue
 - Produces metals people need everyday







What's the solution?



Compromise

We set out to find middle ground between mining companies who seek to invest in the resources near the Boundary Waters and the conservation groups who wish to preserve the area and keep it as is.



Solutions

In order to find a fair compromise, we would...

- ▶ Enforce regulations without exception and create stricter consequences for breaking said rules
- ▶ Ensure that the majority of jobs would be given to the local community, as it is their home and their interests are the priority
- ▶ Encourage partnership between mining companies and environmental conservation groups
- ▶ Require mining companies to pay damage deposits before beginning operations

